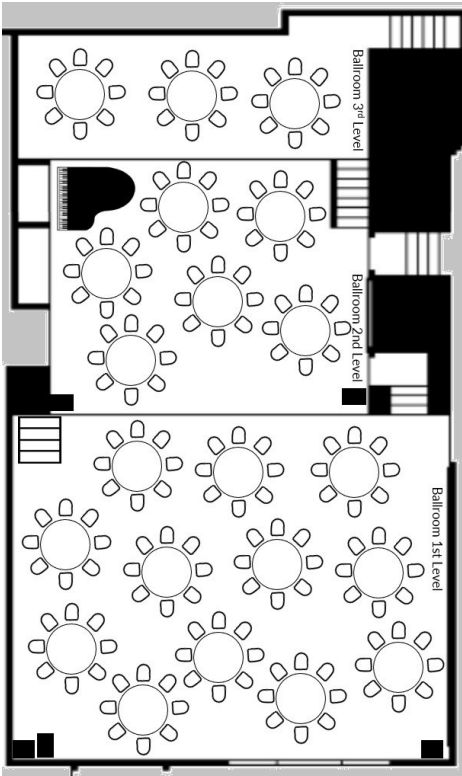
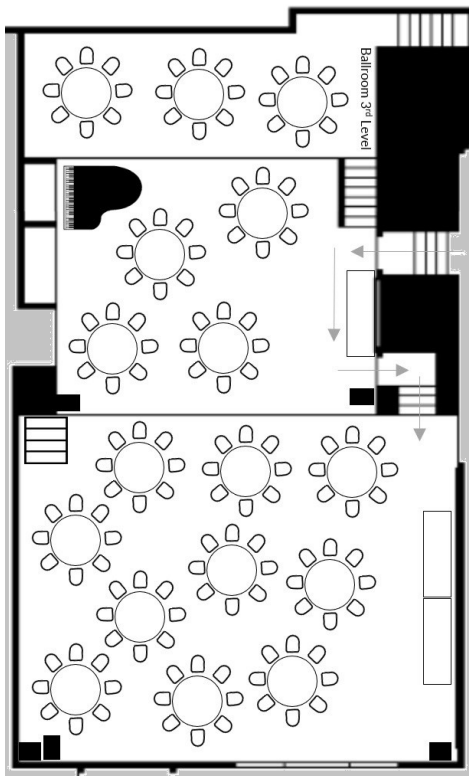


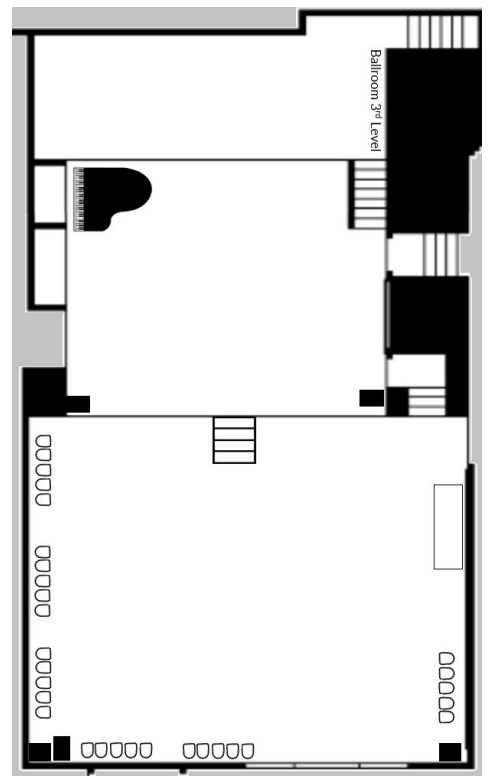
Ballroom Setup Examples



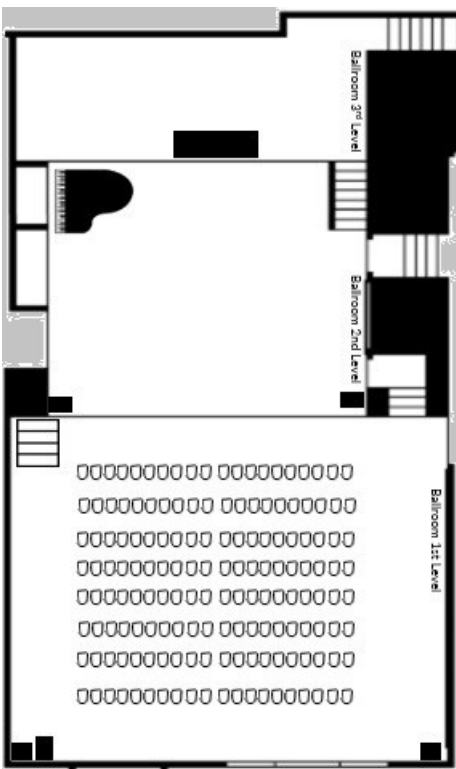
Dining Only (up to 168 people)
 12 tables = 96 people
 6 tables = 48 people
 3 tables = 24 people



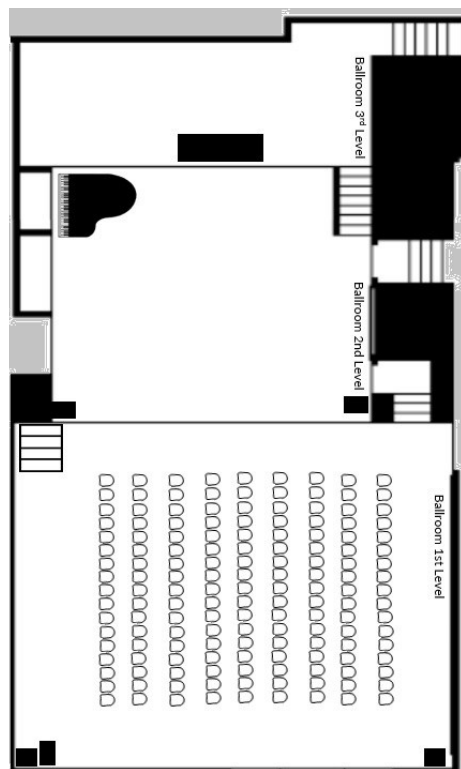
Dining & Serving Tables (80-152 people)
 10 tables = 80 people + 1-2 serving
 4 tables = 32 people
 3 tables = 24 people



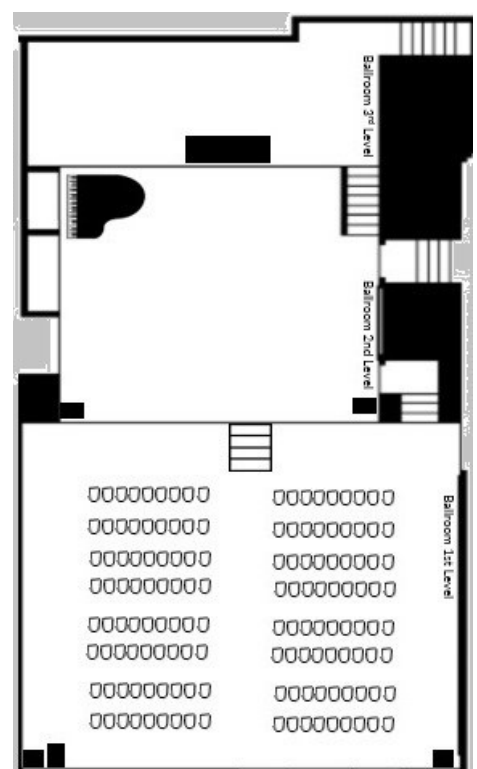
Standing Occupancy: 214



Lecture (up to 160)
 8 rows of 20



Lecture (117-153 chairs)
 9 rows of 17 chairs
 Take out 2-4 chairs per row for an aisle



Lecture (98-144 chairs)
 8 rows of $9 \times 2 = 144$
 7 rows of $7 \times 2 = 98$